

10 Special Products

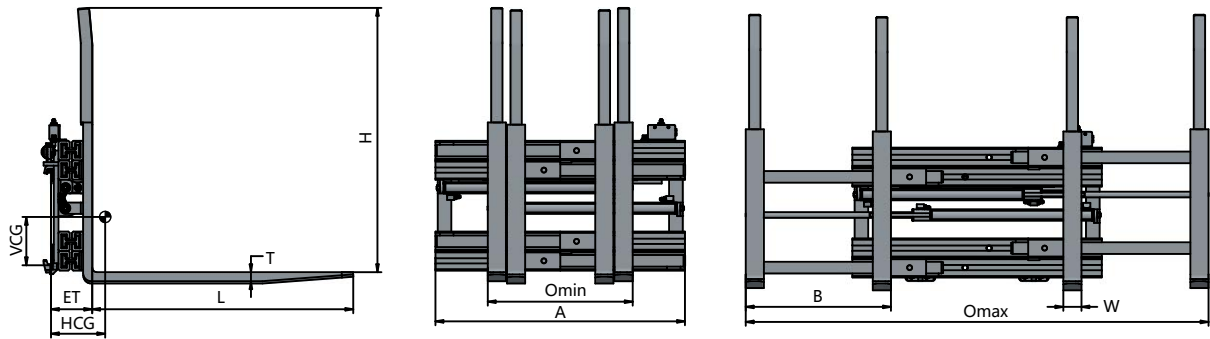
Whether it is concrete, stone, steel, mining, agricultural products, beverage, food handling, etc., we can provide the most suitable scheme.

- 10.1 Single-Double Pallet Handlers
- 10.2 Load Stabilizers
- 10.3 Load Extender
- 10.4 Telescopic Forks
- 10.5 Hydraulic Bucket
- 10.6 Sanitation Forks
- 10.7 Bell Type Block Clamps

10.1 Single Double Pallet Handler



Single Double Pallet Handler



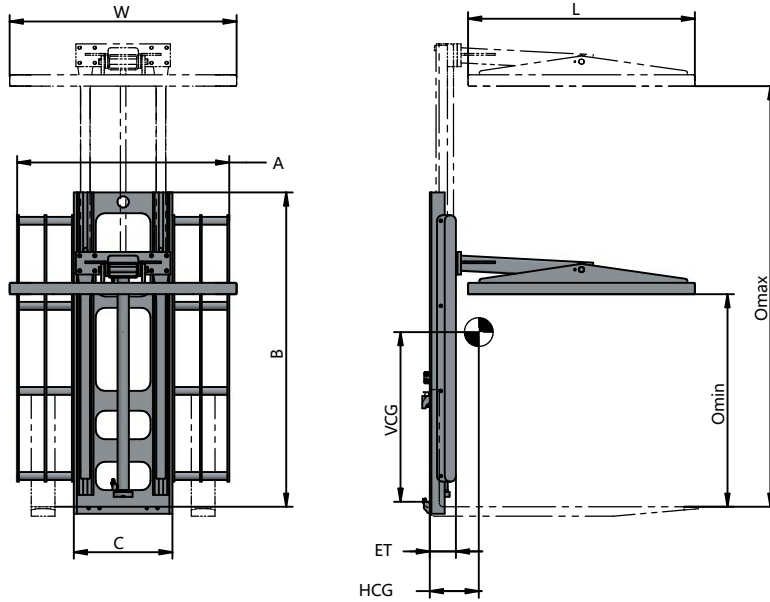
Capacity	Load Center	Model No.	Mounting Class	Opening Range	Fork Set Spacing	Fork Size	Fork Height	Frame Width	Vertical Center of Gravity	Horizontal Center of Gravity	Weight	Effective Thickness
kg	mm			O	B	L*W*T	H	A	VCG	HCG	kg	mm
2000	500	FDS20E-010A	ISO 2A	640-2040	640	1150*80*40	1150	1100	211	240	402	185
2000	500	FDS20E-010B	ISO 3A	640-2040	640	1150*80*40	1150	1100	211	240	402	185

TECHNICAL DETAILS							
Model	Pressure (Bar)	Hydraulic Flow (L/min)					
		Sideshifting			Clamp		
		Min.	Rec.	Max.	Min.	Rec.	Max.
20E	160	4	8	11	15	26	26

- Notes
- ① Obtain the actual capacity of the forklift and attachments from the forklift manufacturer.
 - ② Require two additional hydraulic circles.
 - ③ Sideshifting range is ±100mm.
 - ④ The outer fork tines are 5mm higher than the inner fork tines.



10.2 Load Stabilizer



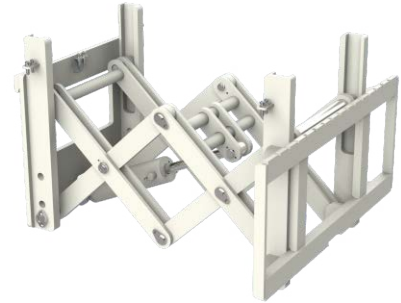
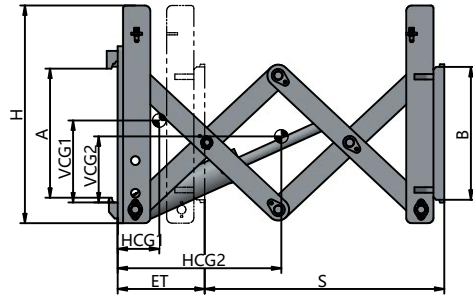
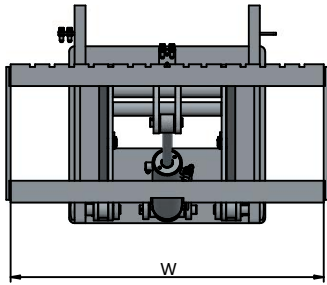
Capacity	Load Center	Model No.	Mounting Class	Opening Range	Contact Pad Size	Backrest Size	Frame Width	Horizontal Center of Gravity	Weight	Effective Thickness
kg	mm			O	W*L	A*B	C	HCG	kg	ET
				mm	mm	mm	mm	mm		mm
2000	500	LSB20D-022B	ISO 3A	1100-2200	1150*80*40	1122*1700	522	228	390	150

TECHNICAL DETAILS				
Pressure (Bar)		Hydraulic Flow (L/min)		
Min.	Max.	Min.	Rec.	Max.
-	160	19	30	38

Notes

- ① Obtain the actual capacity of the forklift and attachments from the forklift manufacturer.
- ② Non-Sideshifting type require two additional hydraulic circles, sideshifting require one additional hydraulic circle.

10.3 Load Extender

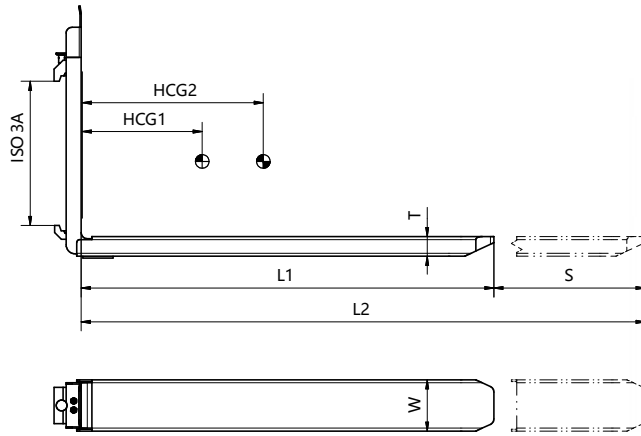


Capacity	Load Center	Model No.	Mounting Class	Stroke	Carriage Width	Vertical Center of Gravity	Horizontal Center of Gravity	Horizontal Center of Gravity	Weight	Effective Thickness
kg	mm			S	W	VCG1	HCG1	HCG2	kg	ET
				mm	mm	mm	mm	mm		mm
2000	500	TFB20E-008B	ISO 3A	500	800	303	122	382	304	280
2000	500	TFB20E-010B	ISO 3A	680	1150	301	153	496	400	320
2000	500	TFB20E-012B	ISO 3A	880	1150	301	153	597	405	320

TECHNICAL DETAILS				
Pressure (Bar)		Hydraulic Flow (L/min)		
Min.	Max.	Min.	Rec.	Max.
35	160	20	40	60

Load Extender

10.4 Telescopic Forks



Capacity @Load Center	Capacity @Load Center	Model No.	Mounting Class	Stroke	Carriage Width	Fork Length Retracted	Fork Length Extended	Horizontal Center of Gravity	Horizontal Center of Gravity	Weight	Effective Thickness
kg	mm			S	W*T	L1	L2	HCG1	HCG2	kg	ET
				mm	mm	mm	mm	mm	mm		mm
2500@600	850@1750	TFQ25D-1350A	ISO 2A	1000	170*65	1350	2350	504	680	250	60
3500@600	1200@1750	TFQ35D-1350B	ISO 3A	1000	170*65	1350	2350	488	688	262	60

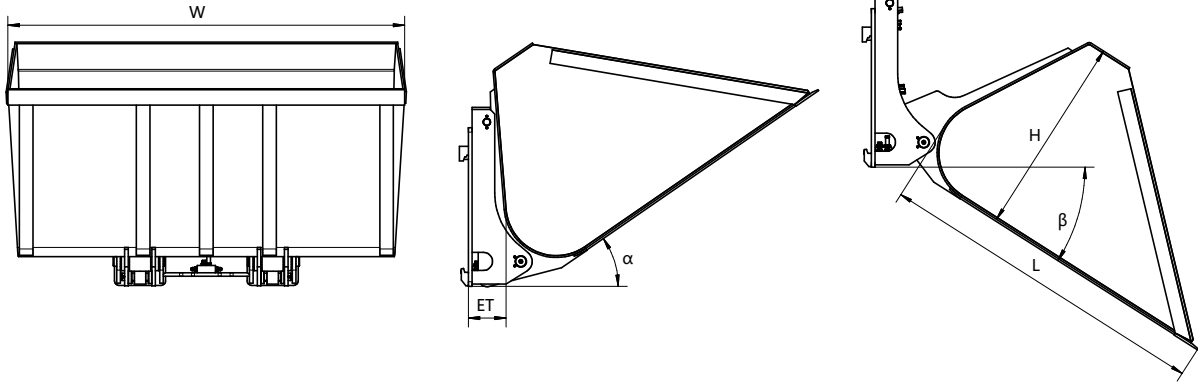
TECHNICAL DETAILS				
Pressure (Bar)		Hydraulic Flow (L/min)		
Min.	Max.	Min.	Rec.	Max.
35	160	15	23	30

Note

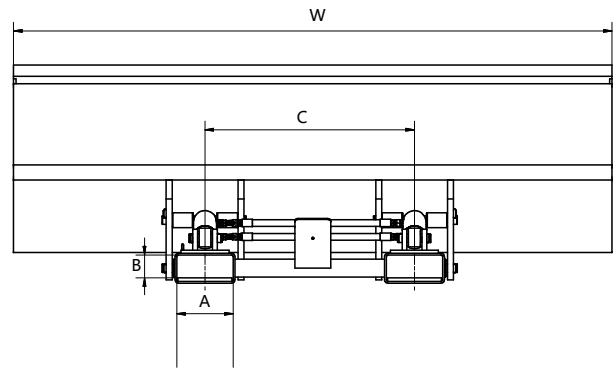
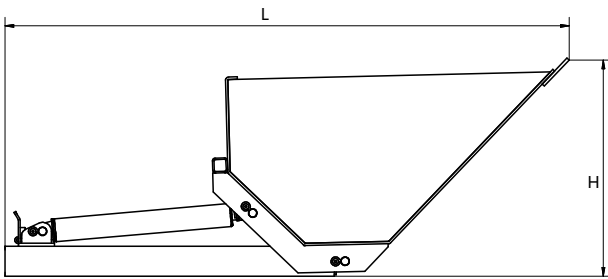
- ① Obtain the actual capacity of the forklift and attachments from the forklift manufacturer.
- ② Require one additional hydraulic circles.

10.5 Hydraulic Bucket

FULLEN



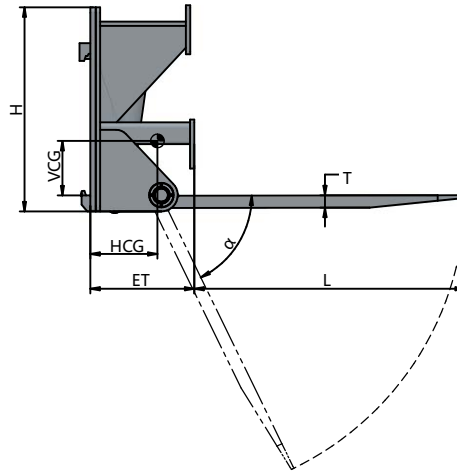
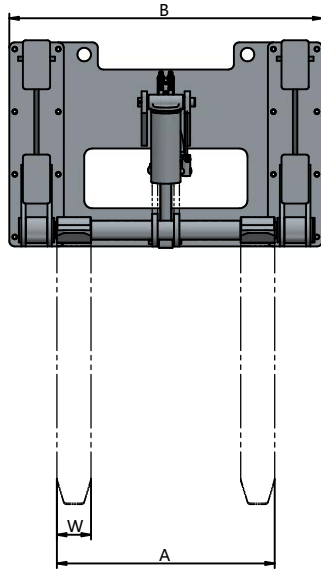
Capacity	Model No.	Mounting Class	Tilt Forward/ Tilt Backward	Length	Width	Height	Volume	Horizontal Center of Gravity	Weight	Effective Thickness
kg			α/β	L	W	H	V	HCG	kg	ET
			°	mm	mm	mm	m ³	mm		mm
2000	CDY20D-008B	ISO 3A	35°/32°	1470	1750	880	1.2	469	620	160



Capacity	Model No.	Tilt Forward/ Tilt Backward	Socket Size	Fork Pocket Center Spacing	Length	Width	Height	Volume	Horizontal Center of Gravity	Weight	Effective Thickness
kg		α/β	A*B	C	L	W	H	V	HCG	kg	ET
		°	mm	mm	mm	mm	mm	m ³	mm		mm
2000	DBHS-20	45°/45°	188*76	700	1885	2000	720	0.8	1015	468	750



10.6 Sanitation Forks



Capacity	Load Center	Model No.	Mounting Class	Tilt Angle	Fork Size	Forks Outer Spacing	Overall Width	Height	Horizontal Center of Gravity	Weight	Effective Thickness
kg	mm			α °	L*W*T mm	A mm	B mm	H mm	HCG mm	kg	ET mm
2500	500	HW25D-006B	ISO 3A	73	994*125*45	800	1150	750	248	388	382
5000	600	HW50D-006C	ISO 4A	90	1000*150*45	1350	1400	865	275	538	300

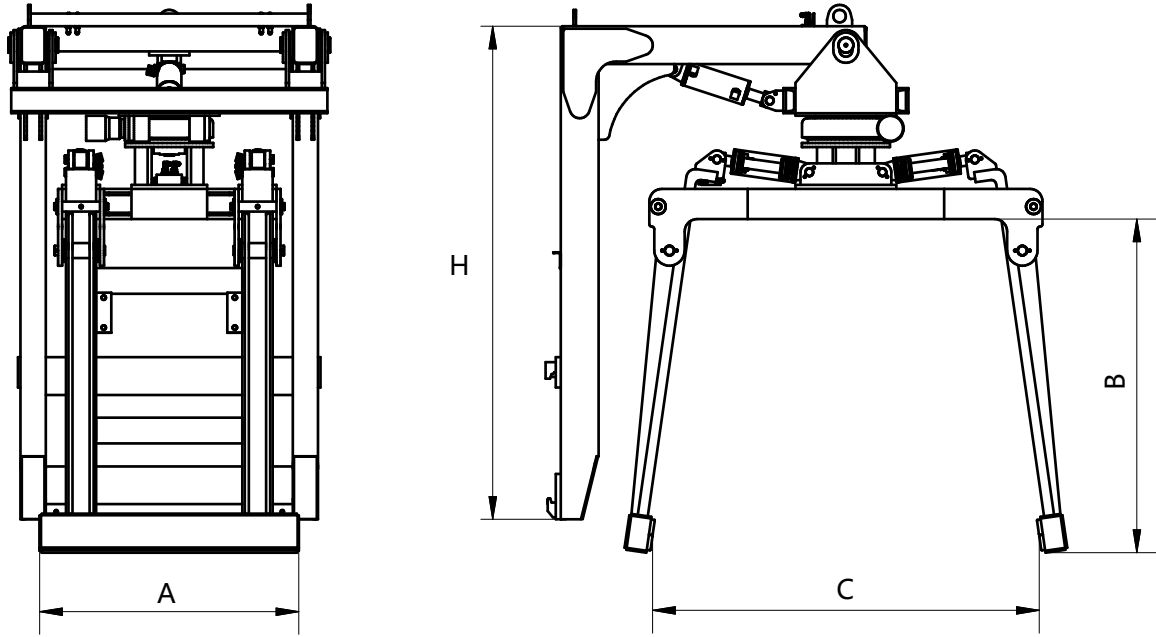
TECHNICAL DETAILS				
Pressure (Bar)		Hydraulic Flow (L/min)		
Min.	Max.	Min.	Rec.	Max.
35	160	15	23	30

Notes

- ① Obtain the actual capacity of the forklift and attachments from the forklift manufacturer.
- ② Require one additional hydraulic circles.

10.7 Bell Type Block Clamp

Bell Type Block Clamp



Capacity	Load Center	Model No.	Mounting Class	Rotating Angle	Height	Arm Length	Arm Height	Block Stack Width	Horizontal Center of Gravity	Weight	Effective Thickness
kg	mm			°	H	A	B	C	HCG	kg	ET
					mm	mm	mm	mm	mm		mm
3000	1050	BRB30D-020B	ISO 3A	360	1956	1200	1250	1200	914	1350	180

TECHNICAL DETAILS				
Pressure (Bar)		Hydraulic Flow (L/min)		
Min.	Max.	Min.	Rec.	Max.
-	160	20	40	60

Notes

- ① Obtain the actual capacity of the forklift and attachments from the forklift manufacturer.
- ② Require two additional hydraulic circles.

